



**ZOOMLION**

**QY30V**

All Hydraulic Truck Crane

 **ZOOMLION**

# ZOOMLION<sup>®</sup> QY30V

ZLJ5323JQZ30V

## All Hydraulic Truck Crane performance parameters

- Full Width Special Purpose Chassis with 3 Axles, 6X4
- Four Sections Hexagon Boom, One Section Jib.
- Single Cylinder Derricking, Double Winches.
- Superstructure is manual proportion control.

We reserve the right to change design and specifications without notice

### Main Technical Parameters

Working performance parameter	Max. rated total load	kg	32000	
	Max. lifting moment of basic boom	kN.m	1132	
	Max. lifting moment of the longest main boom	kN.m	618	
	Max. lifting height of basic boom	m	11.3	
	Max. lifting height of main boom	m	34.6	(No deformation of boom is included)
Working speed	Max. lifting height of jib	m	42	(No deformation of boom is included)
	Max. speed of single rope of main winch	m/min	120	The 4th layer of winch drums
	Max. speed of single rope of auxiliary winch	m/min	77	The 2nd layer of winch drums
	Ascending time of boom	s	45	
	Extending time of boom	s	65	
Traveling parameter	Slewing speed	r/min	0 ~ 2.2	
	Max. traveling speed	km/h	78	
	Max. gradeability	%	37	
	Min. turning diameter	m	22	
	Min. ground clearance	mm	220	
Weight parameter	Emission		Meet with related standard GB3847-2005 GB17691-2005 stage III	
	Oil consumption/per 100 kilometers	L	45	
	Dead weight of crane in traveling status (total weight)	kg	29530	
	Total weight of crane	kg	29400	
	Front axle load	kg	6980	
Dimension parameter	Rear axle load	kg	22550	
	Outline dimension(L × W × H)	mm	12900 × 2500 × 3400	
	Longitudinal span of outriggers	m	5.36	
	Lateral span of outriggers	m	6.1	
	Main boom length	m	10.7 ~ 34.0	
Chassis	Elevation angle of main boom	°	-2 ~ 80	
	Jib length	m	8	
	Mounting angle of jib	°	0、30	
	Model		ZLJ5323 Feature No: ZLJ532V3.2 ZLJ5323V3.3T	
	Class		II	
Chassis	Engine model		WP10.270 QSC 260 ZLJ532V3.2 / ZLJ5323V3.3T	
	Engine rated power	kW/r/min	199/2200 194/2200 WP10.270 QSC 260	
	Engine max. output torque	N.m/r/min	1100/1300-1600 1180/1500 WP10.270 QSC260	
	Manufacturer		PUYUAN branch of ZOOMLION	

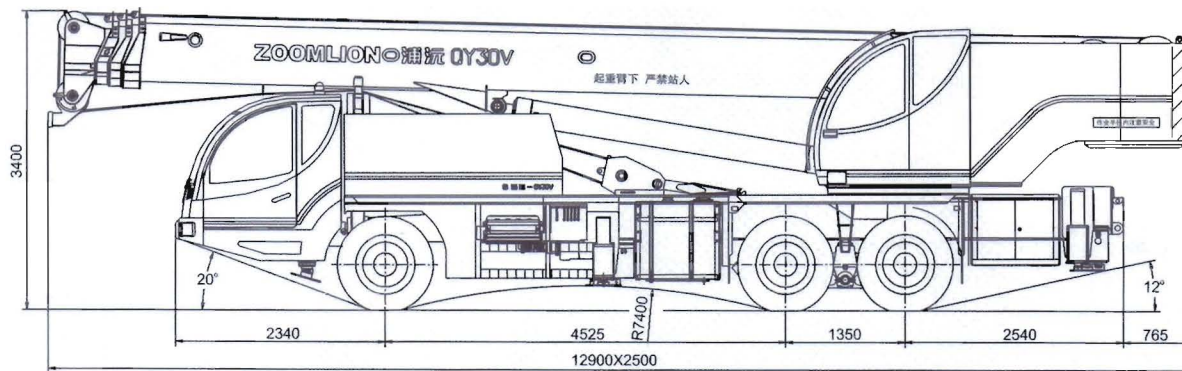


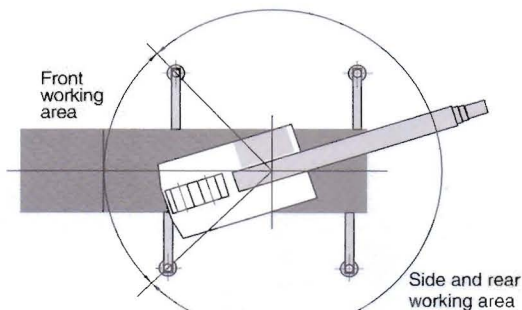
Table of rated lifting load

Unit: kg

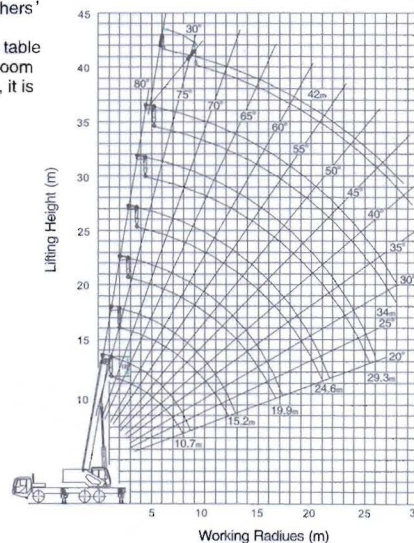
working radius (m)	Main boom (m)												Elevation angle of main boom	Main boom+ jib 34 + 8(m)			
	Front area (with the 5th outrigger), side & rear area						Without the 5th outrigger, front area							Mounting angle of jib		Mounting angle of jib	
	10.70	15.20	19.90	24.60	29.30	34.00	10.70	15.20	19.90	24.60	29.30	34.00		Side & rear area	Front area	Side & rear area	Front area
3.0	32000	20000					32000	20000					80	3000	3000	1500	1500
3.5	30000	20000	18000				30000	20000	18000				78	3000	3000	1500	1500
4.0	28000	20000	18000				28000	20000	18000				76	3000	3000	1500	1500
4.5	25000	20000	17500				25000	20000	17500				74	2900	2900	1500	1500
5.0	23000	20000	17000	12000			23000	20000	17000	12000			72	2800	2800	1450	1450
5.5	21000	19000	16000	12000	9000		17800	18100	16000	12000	9000		70	2650	2450	1400	1400
6.0	18500	18000	15000	11500	9000		14000	14600	15000	11500	9000		68	2500	2050	1350	1350
6.5	16500	16600	14000	10800	9000		11600	12000	12500	10800	9000		66	2400	1750	1300	1300
7.0	14600	15000	13000	10200	9000	7500	9800	10400	10700	10200	9000	7500	64	2300	1450	1270	1200
8.0	11600	12000	11500	9100	8200	7000	7100	7700	8000	8000	8200	7000	62	2150	1250	1240	1050
9.0	9500	9800	10000	8300	7500	6500	5400	5900	6200	6300	6500	6500	60	2050	1050	1210	850
10.0		8200	8400	7600	6800	6000		4700	5000	5100	5200	5300	58	1850	900	1180	750
11.0		6900	7100	6900	6200	5500		3700	4000	4100	4200	4300	56	1650	700	1150	600
12.0		5900	6100	6200	5700	5100		3000	3300	3400	3500	3600	54	1500	600	1120	500
13.0		5000	5300	5400	5300	4700		2400	2700	2800	2900	3000	52	1350	450	1100	350
14.0			4500	4700	4800	4400			2200	2300	2400	2500	50	1200	350	1070	250
15.0			4000	4200	4300	4200			1800	1900	2000	2100	45	920		840	
16.0			3500	3700	3800	3900			1500	1600	1700	1800	40	700		660	
18.0			2700	2900	3000	3100				1100	1200	1300	35	520		490	
20.0				2300	2400	2500				700	800	900	30	370			
22.0				1900	1900	2000					500	580					
24.0					1500	1600											
26.0					1200	1250											
28.0						1000											

Caution:

- Above working conditions are all with outrigger fully extended, never lift a load on the wheels.
- If the fifth outrigger works, the values in the above table are suitable for 360° round operating conditions.
- The value in the above table is the permitted max. load under various stipulated operating conditions, i.e. the rated total load, which includes hook's weight 340kg, auxiliary hook's weight 95kg and others' in any operating conditions.
- Radius in the above table is the horizontal distance from vertical slewing center line to the vertical center line of crane hook when crane is loaded.
- When actual boom length and radius are between two values in the above table, larger value should be taken to ascertain load. E.g., when actual boom length is 18m and radius is 4.8m, the boom length 19.90m and radius 5.0m should be taken to ascertain load (17000kg).
- When main boom works while the jib has been extending, its rated load should be subtracted by not only hook and others' weight, but also jib's weight 600kg.
- When single sheave in boom end is used, max. rated total load is 3000kg. But if the rated load gotten from the above table due to actual operating conditions is less than 3000kg, the value of rated load is the gotten value. E.g. when actual boom length is 19.90m and radius is 6.5m, the rated load is 3000kg, while actual boom length is 29.30m and radius is 20m, it is 2400kg.
- When jib works while main boom is in the extreme length, main boom's elevation angle must be not less than 30°.



Set up the 5<sup>th</sup> outrigger, it is suitable for 360° operation.





Add: No.613 the 3<sup>rd</sup> District Furong Middle Road, Changsha, Hunan,China  
Tel: 0086-731-5667238  
Fax: 0086-731-5591796  
PC: 410007  
E-mail:export@puyuan.com.cn

Pictures and technical Parameters in sample books may not accord with the delivery goods because of the improvement in design.  
Please understand and make allowance for our problems without notice.

**[www.zoomlion.com](http://www.zoomlion.com)**