



**Kato MR-220 City Class - TECHNICAL SPECIFICATIONS**

Maximum lifting capacity / radius:	22t / 2.8m
Main boom:	5.0 – 28.0m (6 section)
Main boom extension:	9.2 / 17.6m
Maximum system length:	50 + 17.6 = 67.6m
Overall length:	9.065m
Carrier length:	3.5m
Turning radius over boom head:	11.4 / 9.7m
Carrier engine:	Mitsubishi 6D16-TE1 6 cyl. (Turbo Charged) 4 cycle water cooled, direct injection, diesel
Maximum travel speed:	49 km/h
Drive / steer:	4 x 2 (4 x 4) Full hydraulic power steering with reverse steering correction mechanism
Tyres:	385/95R25 170E Road
Maximum gradeability:	60%
Maximum counterweight:	
Gross vehicle weight	24t



28.0m Boom + 5.4m Jib (Standard Hook for 4.0 tonne - Hook Mass 60kg)													
Outriggers fully extended (6.0m) - 360° full range							Outriggers intermediately extended (4.5m) - 360° full range						
Boom Angle (°)	offset 5°		offset 25°		offset 45°		Boom Angle (°)	offset 5°		offset 25°		offset 45°	
	working radius (m)	load (t)	working radius (m)	load (t)	working radius (m)	load (t)		working radius (m)	load (t)	working radius (m)	load (t)	working radius (m)	load (t)
81.0	5.2	3.0	7.0	2.5	8.3	1.6	81.0	5.2	3.0	7.0	2.5	8.3	1.5
77.7	7.2	3.0	8.9	2.5	10.0	1.6	77.7	7.2	3.0	8.9	2.5	10.0	1.5
75.0	8.9	3.0	10.4	2.3	11.4	1.5	75.0	8.9	3.0	10.4	2.3	11.4	1.5
73.0	10.0	3.0	11.5	2.1	12.4	1.4	73.0	10.0	3.0	11.5	2.1	12.4	1.4
70.0	11.7	2.6	13.1	1.9	13.9	1.4	70.0	11.7	2.6	13.1	1.9	13.9	1.4
65.0	14.3	2.1	15.7	1.6	16.3	1.3	69.0	12.2	2.5	13.6	1.8	14.4	1.4
60.0	16.8	1.8	18.1	1.4	18.7	1.3	67.0	13.2	2.1	14.7	1.7	15.3	1.3
55.0	19.2	1.5	20.3	1.3	20.8	1.2	64.0	14.7	1.6	16.0	1.4	16.8	1.3
54.0	19.6	1.4	20.7	1.3	21.2	1.2	60.0	16.6	1.1	17.9	1.0	18.5	1.0
53.0	20.4	1.2	21.5	1.1	22.0	1.1	55.0	18.0	0.7	19.0	0.6	20.7	0.6
50.0	21.2	1.1	22.3	1.0	22.7	1.0	50.0	21.0	0.4	21.9	0.3	-	-
48.0	22.0	1.0	23.0	0.9	23.3	0.9	Critical Boom Angle	48°		48°		53°	
45.0	23.2	0.8	24.1	0.7	-	-							
40.0	25.0	0.5	25.6	0.5	-	-							
35.0	26.6	0.4	27.2	0.3	-	-							
Critical Boom Angle	33°		33°		46°								

28.0m Boom + 8.2m Jib (Standard Hook for 4.0 tonne - Hook Mass 60kg)													
Outriggers fully extended (6.0m) - 360° full range							Outriggers intermediately extended (4.5m) - 360° full range						
Boom Angle (°)	offset 5°		offset 25°		offset 45°		Boom Angle (°)	offset 5°		offset 25°		offset 45°	
	working radius (m)	load (t)	working radius (m)	load (t)	working radius (m)	load (t)		working radius (m)	load (t)	working radius (m)	load (t)	working radius (m)	load (t)
81.0	6.0	2.0	8.7	1.2	10.5	0.8	81.0	6.0	2.0	8.7	1.2	10.5	0.8
77.0	8.7	2.0	11.1	1.2	12.7	0.8	77.7	8.7	2.0	11.1	1.2	12.7	0.8
75.0	10.0	2.0	12.2	1.2	13.7	0.7	75.0	10.0	2.0	12.2	1.2	13.7	0.7
72.0	11.9	1.8	14.0	1.2	15.3	0.7	72.0	11.9	1.8	14.0	1.2	15.3	0.7
70.0	13.0	1.7	15.1	1.1	16.4	0.7	70.0	13.0	1.7	15.1	1.1	16.4	0.7
65.0	15.9	1.4	17.8	1.1	18.9	0.7	65.0	15.9	1.4	17.8	1.1	18.9	0.7
60.0	18.6	1.3	20.3	1.0	21.3	0.6	63.0	16.9	1.2	18.8	1.0	19.8	0.7
55.0	21.2	1.2	22.7	0.9	23.5	0.6	60.0	18.4	0.9	20.2	0.8	21.3	0.6
53.0	22.1	1.1	23.0	0.8	24.3	0.6	58.0	19.4	0.8	21.2	0.7	22.2	0.6
50.0	23.5	0.9	24.9	0.7	25.4	0.6	55.0	20.8	0.6	22.5	0.5	23.3	0.5
47.0	24.7	0.8	26.1	0.6	26.5	0.6	50.0	23.1	0.3	-	-	-	-
45.0	25.6	0.6	26.8	0.5	-	-	Critical Boom Angle	48°		53°		53°	
40.0	27.5	0.4	28.5	0.3	-	-							
35.0	29.1	0.3	-	-	-	-							
Critical Boom Angle	33°		38°		45°								

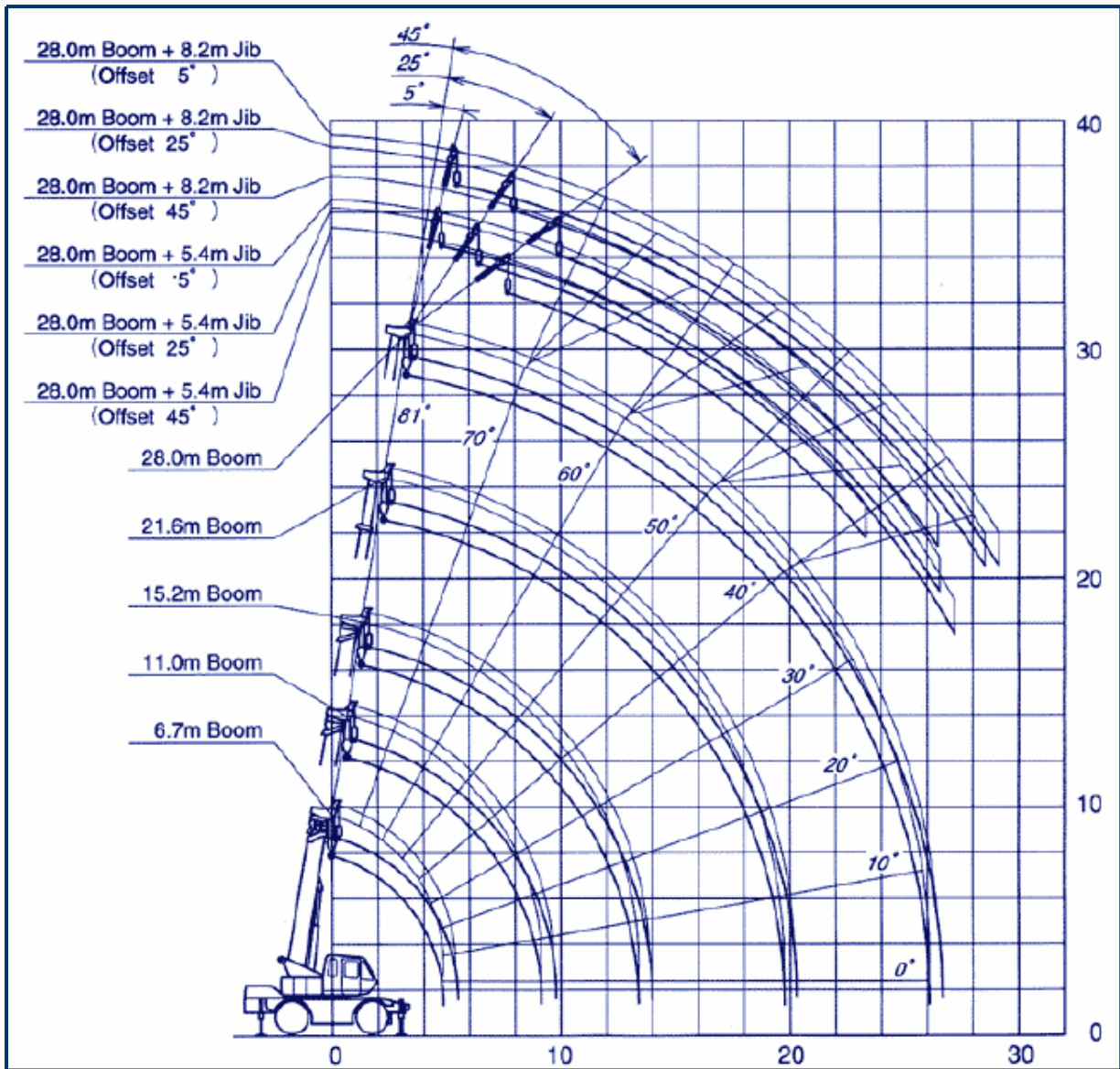
Stationary on rubber (without riggers)						
Working Radius (m)	6.7m boom		11.0m boom		15.2m boom	
	over front	360° full range	over front	360° full range	over front	360° full range
3.0		6.0		5.5		5.2
3.5	8.5	4.5	8.5	4.1	8.0	3.8
4.0	8.5	3.3	8.5	3.2	8.0	3.0
4.5	7.5	2.5	7.2	2.5	6.5	2.4
5.0			6.1	2.0	5.4	1.9
5.5			5.1	1.5	4.5	1.5
6.0			4.2	1.2	3.8	1.1
6.5			3.5	0.9	3.3	0.8
7.0			3.0	0.6	2.8	
8.0			2.1		2.0	
9.0			1.5		1.5	
10.0					1.0	
11.0					0.6	
Standard Hook	for 22 tonne					
Hook Mass	200kg					
Parts of line	6		4			
Critical Boom Angle	-	-	-	30°	33°	57°

(Unit: metric tonne)

Pick & Carry (less than 2km/h) (without riggers)						
Working Radius (m)	6.7m boom		11.0m boom		15.2m boom	
	over front	360° full range	over front	360° full range	over front	360° full range
3.0		4.8		4.4		4.0
3.5	6.8	3.6	6.4	3.3	5.9	3.0
4.0	6.8	2.6	6.4	2.5	5.9	2.4
4.5	6.0	2.0	5.5	2.0	5.0	1.9
5.0			4.7	1.5	4.3	1.4
5.5			4.1	1.0	3.6	1.0
6.0			3.4	0.6	3.1	0.6
6.5			2.8		2.6	
7.0			2.4		2.2	
8.0			1.6		1.6	
9.0			1.0		1.0	
10.0					0.5	
11.0						
Standard Hook	for 22 tonne					
Hook Mass	200kg					
Parts of line	6		4			
Critical Boom Angle	-	-	-	42°	35°	60°

(Unit: metric tonne)

**Working Range**



Footprint

